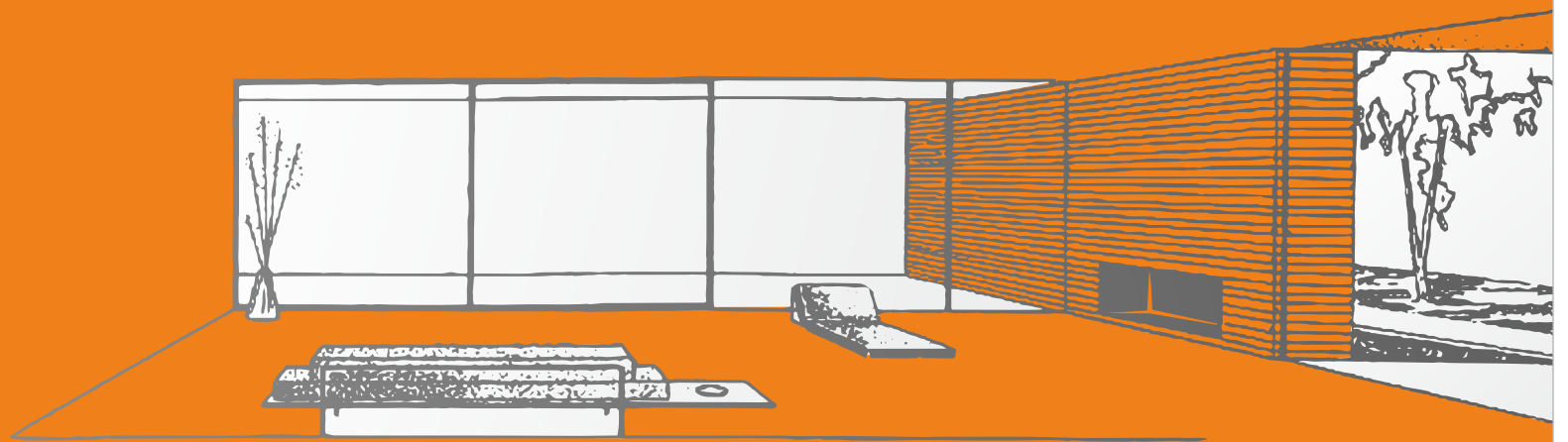


A Project of

INVICON PROPERTIES
A SYMBOL OF TRUST

LUXURY IS NOW AFFORDABLE



SRIKOVIL

luxurious lifestyle apartment @ Vidyadharapuram

SRIKOVIL

A TRUE URBAN OASIS FOR CITY CENTRE COMFORTS

Srikovil, a prime residential enclave, is so strategically sited in the middle of Vijayawada, you will almost feel the pulsating heart beat of the city. What's more, the independently planned apartments pay rich tribute to discreet privacy and elite exclusivity while providing a vibrant lifestyle that's replete with elegance, peace and spaciousness. Look no further. Come home to Srikovil.



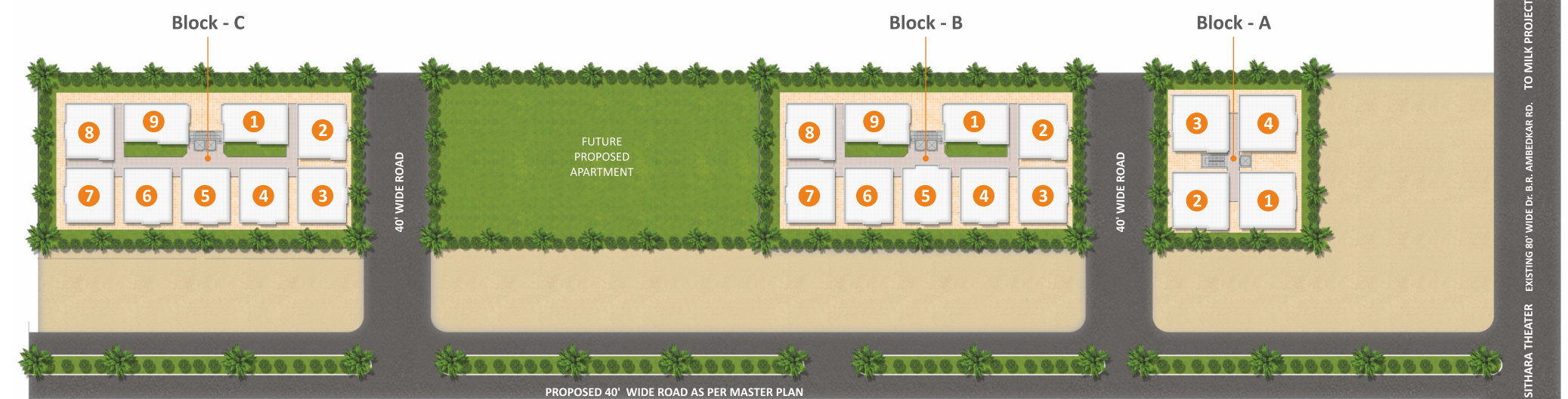
SAVOUR AN ENVIRONMENT THAT CELEBRATES
EXTRAORDINARY LIVING EXPERIENCES

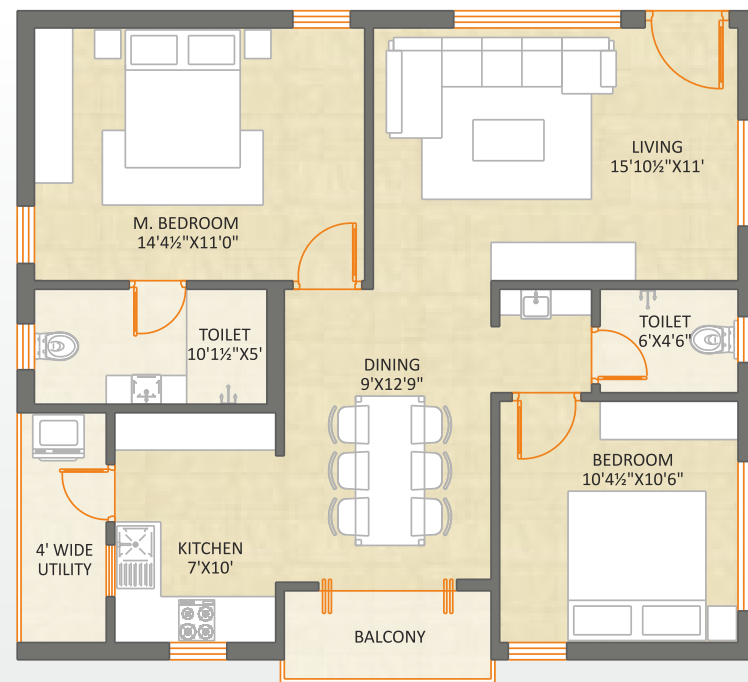


Projects Features

- luxury apartments in a safe, secure environment with perfect planning and designing
- 100% Vaastu Compliant
- Elegant luxury apartments with open to sky spaces
- Car parking spaces for each unit
- Footpath with paved surface dotted with greenery throughout the site
- Well-lit common spaces
- Intercom

Site Plan

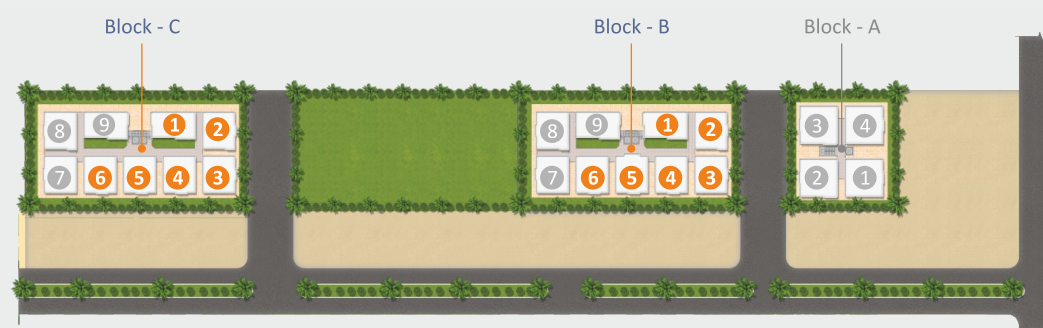




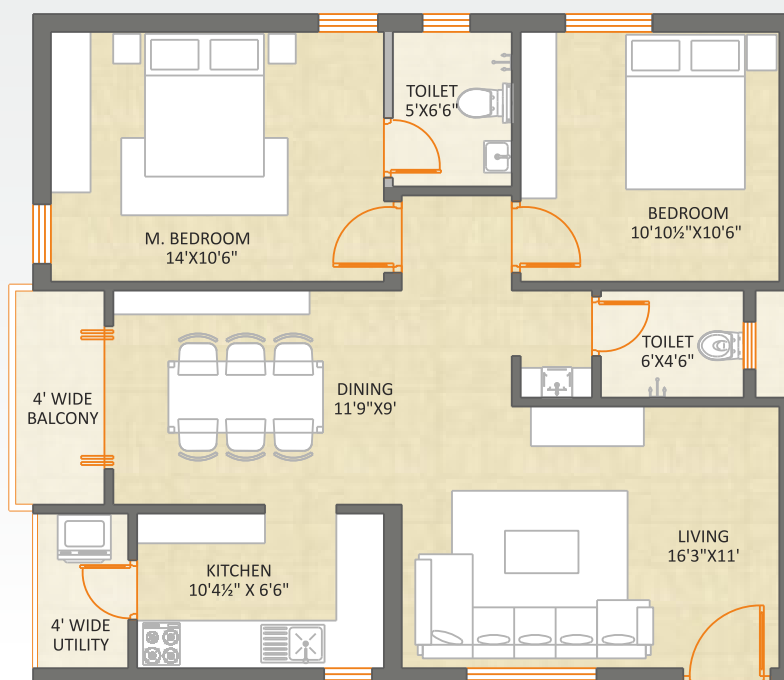
West Facing, Block-B & C
2BHK, FLAT - 3 | 1110 SFT.



West Facing, Block-B & C
3BHK, FLAT - 2 | 1110 SFT.



East Facing, Block-B & C
2BHK, FLAT - 4, 5, 6 | 1110 SFT.

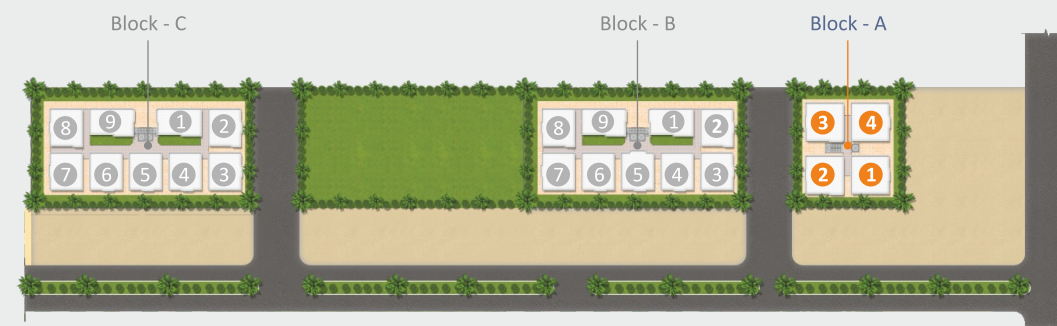
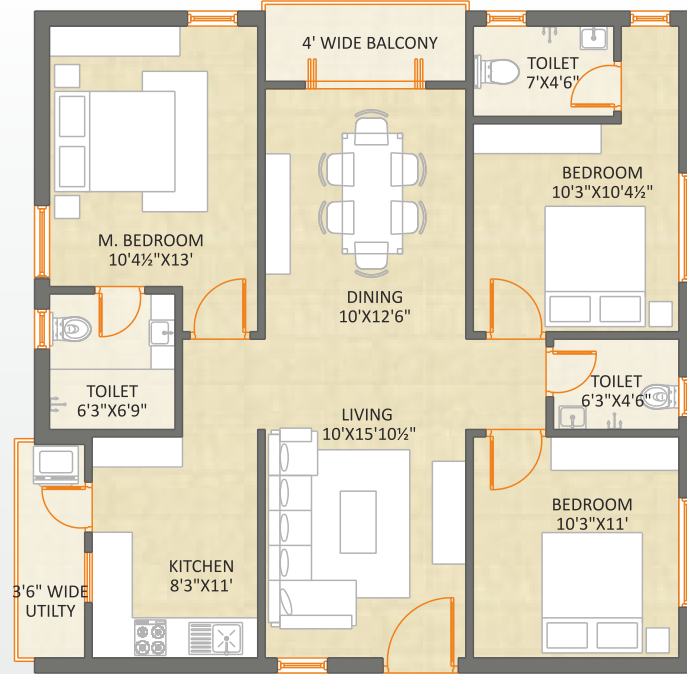


East Facing, Block-B & C
2BHK, FLAT - 1 | 1050 SFT.

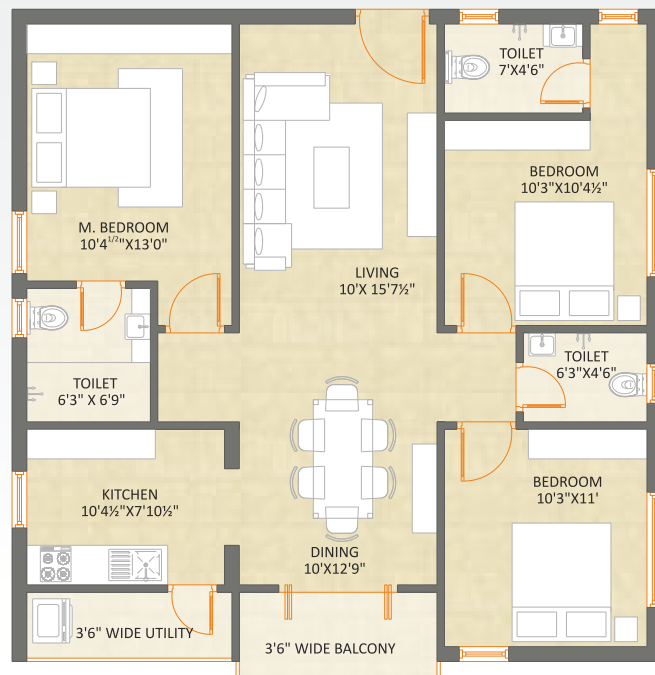


SRIKOVIL

East Facing, Block-A
3BHK, FLAT - 2 & 3 | 1320 SFT.



West Facing, Block-A
3BHK, FLAT - 1 & 4 | 1320 SFT.



Specifications

STRUCTURE

RCC Framed structure to withstand seismic loads, Red Brick / AAC Blocks masonry in cement mortar

EXTERNAL WALLS

Texture / plaster finish with two coats of weather proof paint

JOINERY WORKS

Main Door : Specially designed polished teak wood frame with veneer flush shutter

Internal Door : Teak wood frame with veneer flush shutter

Windows : UPVC windows (Provision for mosquito mesh shutters)

ELECTRICAL

Wiring : Concealed copper wirings as per ISI standard

Outlet points : Modular Switches for all lights, fan and Power plugs

Power plug Points : For A/C in all Bedrooms, Geyser in all Bedrooms, Cooking range, Refrigerators Microwave, Cable T.V and Internet

PLASTERING & PAINTING

Plastering with two coats of acrylic emulsion over a base coat of primer with luppam finish for ceilings and walls

FLOORING

Vitrified Tiles of RAK / Johnson / Restile or equivalent in Living, Dining, Kitchen and Bedrooms

TOILETS

Anti-skid ceramic Tiles Flooring, Glazed ceramic tiles dado upto 7' ht shower, Wall Hung Closet With Soft Closing Seat Covers , Single Lever Hot and Cold Diverter system (Hindware/Parryware or equivalent)

KITCHEN

Polished granite platform with Stainless steel sink, Designer Ceramic tiles dadoing upto 2 feet above kitchen platform

LIFTS

Eight passenger Automatic lifts of Standard make with V3f Facility

GENERATOR

Generator backup for lifts, external stairs, five light points & three fan points in each apartment

BALCONY & CORRIDORS

Best quality rustic finish ceramic tiles

STEPS

Best quality Granite / Vitrified tiles

PLUMBING

CPVC / PVC sanitary piping

PARKING – DRIVE WAY

Tiles / Stone / VDF

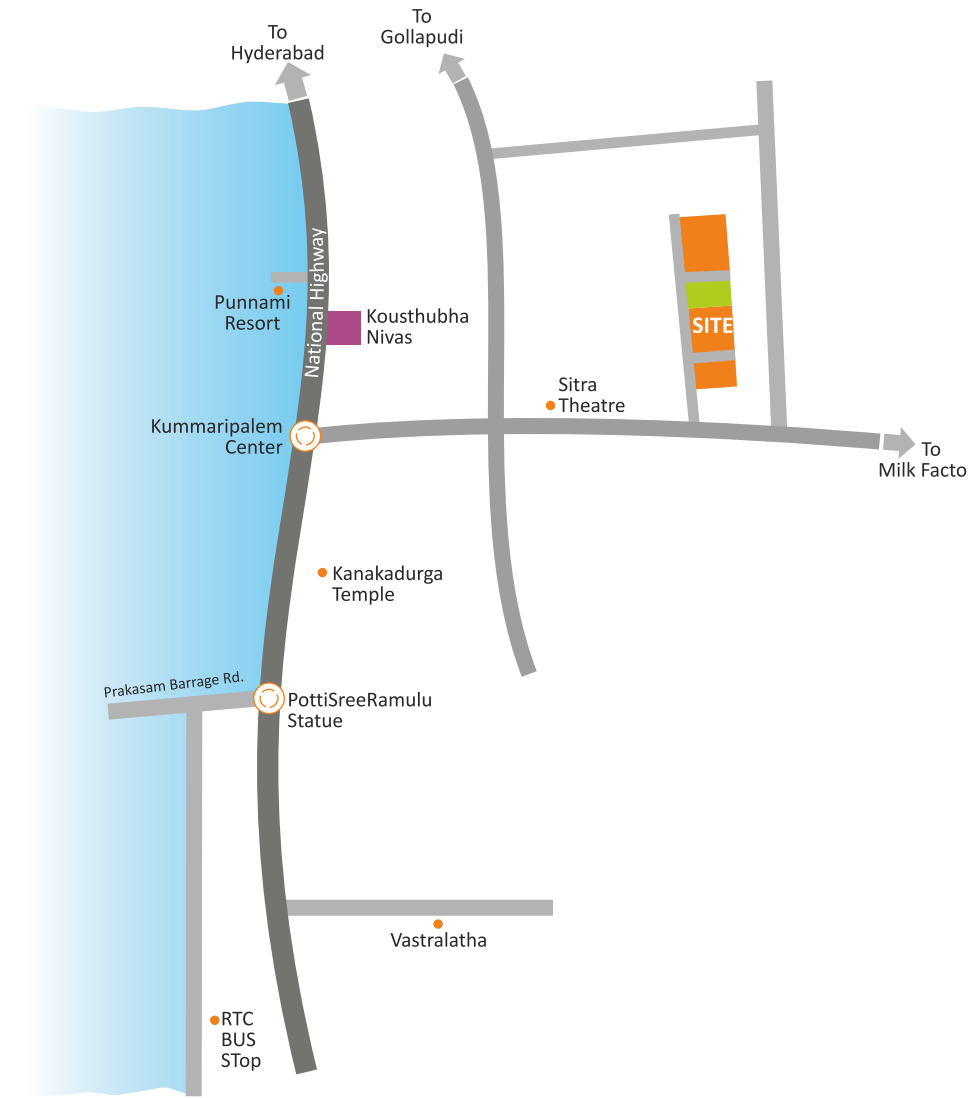


**FEEL CONNECTED
TO THE CITY PULSE,
YET FULLY AT PEACE**

Just off Dr. B.R. Ambedkar Road and on the wide road facing the landmark Milk Factory, Srikovil is located in the veritable heart of Vijayawada. Here, you will feel totally connected to the bustle of the city, yet equally, thoroughly at peace. So simply shut out the crowds and relax in a serene, pristine living area that has sprawling public garden, reputed educational institutions all around, scores of modern entertainment choices, and best of healthcare options.



SRIKOVIL



Location Map
(not to scale)

Delightful Highlights

- Vijayawada one town
- Close to Bhavanipuram iron yard
- Close to Milk Project
- Close to Business hub vastralatha
- Close to K.B.N. College
- Close to Kanakadurga Temple
- Vijayawada Busstand just about 15 min driving Distance
- Vijayawada Railway Station about 10 min driving Ditsance

Ongoing Projects



Centrally placed near Vastralatha, Kousthubha is an opportunity to live magnificently in the 'City of Victory' - Vijayawada. The exquisite apartments promise warmth and elegance while the site enables convenient walk-to-work experience for business owners of Vidhyharapuram Road and Kummaripalem Centre. The peaceful, recharging greenery assures an unhurried lifestyle. The contemporary facilities make life much more easier as well. And every corner of gated enclave reflects joy and playfulness. Especially, the independent clubhouse offers luxurious activities for recreational living to make everyday living an attractive experience. In essence, Resort-like living...at home!



Silver Springs

Spread over an area of about 3.4 acres, Silver Springs presents premium 2 BHK and 3 BHK apartments on ground + 4 floors with superior amenities that are second to none. Ideally placed at West Tambaram off Mudichur Road, the bustling hub of Chennai that promises citywide connectivity, clean water, pure air, urban facilities and growth, this yet another pristine project of Invicon Properties assures a fresh lifestyle for fortunate few. In essence, the fully gated community is deftly designed to meet present and future demands of its distinguished residents with ease.



Promoters

CREINO VENTURES

D. No. : 40-1-44, RS Brothers Building,
M.G. Road, Venkateswarapuram, labbipet,
Vijayawada - 520010.

Site

Near D. No. 3-1-294, Off. Dr. Ambedkar Road,
Vidyadharapuram, Vijayawada - 520010.
Ph: 73820 18811, 73820 18822

Architects

M. Rajasekhar B.Arch, AIIA,
DESIGN CONCEPTS
Lumbini Enclave, Srinagar, Kakinada - 533003.
Ph: 0884-2387979, 040-23050408,
Cell: 9848024433
E-mail: descon1999@gmail.com

Structural Engineer

Dr. V. Anjaneya Prasad
VAP ENGINEERS (I) PVT LTD
Vasantha Emerald Gardens,
G1, Classic Gardens,
Madhapur, Hyderabad.
Ph: + 91 9848197807

Electrical Consultant

Hyderabad Consulting Engineers
Flat No.2, Meghana Apartments,
West Marredpally, Secunderabad - 26.
Ph: +91 40 2780 1862 / 4017 7078,
E-mail: hce@hcengineers.com, www.hcengineers.com

PLUMBING Consultant

Techno Engineering Services
150, Aditya Enclave,
Ameerpet, Hyderabad.

Note: This brochure is only a conceptual presentation of the project and not a legal offering. The promoters reserve the right to alter and make changes in elevation, specifications and plans as deemed fit.

a concept of |d3| 98491 92657